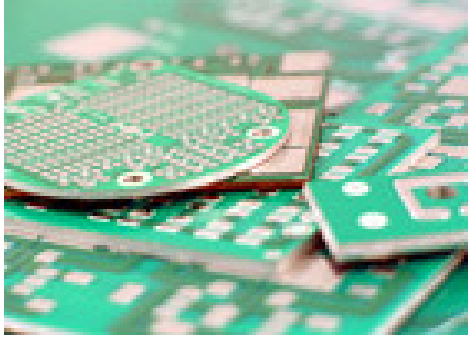


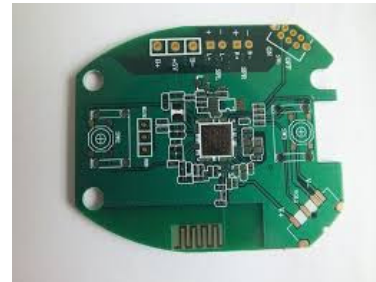


LIGHTNING CIRCUITS INC. - PROCESSING CAPABILITIES



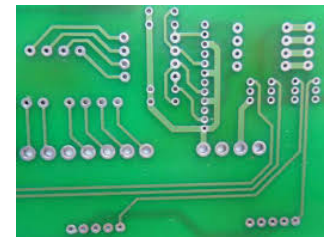
Line Width	Minimum 0.012"
Line Spacing	Minimum 0.012"
Hole to Pad (Annular Ring)	
1 Ounce Copper	Minimum 0.010"
	(Land Diameter + 0.020")
	Recommended 0.020" or Greater
2 Ounce Copper	Minimum 0.015"
	(Land Diameter + 0.020")
	Recommended 0.020" or Greater

Note: It is recommended that the minimum annular ring dimension is to be utilized only when space constraints demand it. It is recommended that wherever possible, a larger annular ring (aperture) be incorporated.



Hole Diameter – Drilled	Minimum 0.020" +/- 0.003"
– Punched CEM 1	Minimum 0.039" +/- 0.003"
FR4	Minimum 0.040" +/- 0.003"

Solder Mask Opening	0.015" Annular Ring
Conductor to Board Edge	Minimum 0.015"
Bow and Twist	0.75%
Finished Panel Dimensions	+/- 0.010"
Finished Board Dimensions	+/- 0.010" (2 Decimals)
Finished Board Dimensions	+/- 0.005" (3 Decimals)
Hole to Hole	+/- 0.003"
Hole to Edge	+/- 0.005"
Registration: Hole to Land	+/- 0.005"
Land to S/M	+/- 0.005"



Laminate: CEM 1, CEM 3, FR4 – Single and Double Sided (Non P.T.H.)
 Solder Mask: Taiyo UV Curable and LPI – Black, White, Green, Peelable
 Component Markings: Sun Chemical – Black, White, Yellow
 (Additional Colours Available Upon Request)
 Surface Finish: Immersion Silver, Tin/Lead Solder, Lead Free Solder, OSP

Note: Other processing capabilities are available through Lightning Circuits approved supplier network